

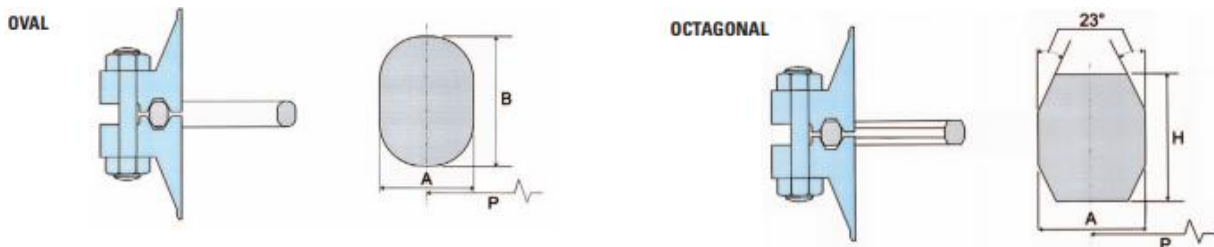
# Ring Type Joints

## INFORMATION / SPECIFICATION SHEET

Ring Type Joints (RTJ's) are commonly used in the oil, petroleum and chemical process industries to provide an exceptional seal where high mechanical and thermal performance is required. Ring Type Joint gaskets are manufactured in a variety of configurations, including RX, BX, R, Oval and Octagonal.

### STYLE R – DIMENSIONAL DATA

Style R is the original ring joint gasket design which can be used in modern flanges having the standard ring joint flat bottom groove as well as older flanges with the rounds bottom groove style. The octagonal version was introduced to provide increased contact area resulting in higher sealing efficiency.



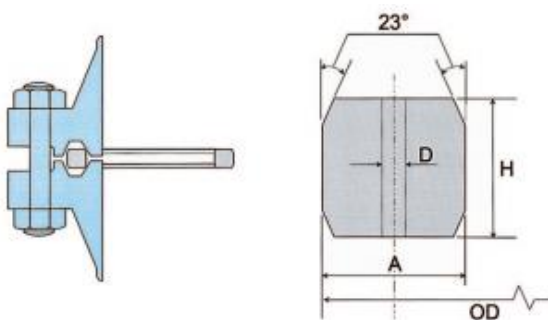
#### STYLE R TOLERANCES

Dimension	Tolerances (mm)	
	API 6A & 17D	ASME B16.20
<b>A</b> Width of ring	±0.20	±0.20
<b>B, H</b> Height of ring	±0.5	+1.3/-0.5
<b>C</b> Width of flat	±0.20	±0.20
<b>P</b> Average pitch diameter	±0.18	±0.18
<b>23°</b> Angle of sealing face	±0° 30'	±0° 30'

### STYLE BX & RX – DIMENSIONAL DATA

Pressure energized ring joint gasket with unique self-sealing action. Internal pressure during service increases loading on the gasket thereby improving the gaskets sealing performance.

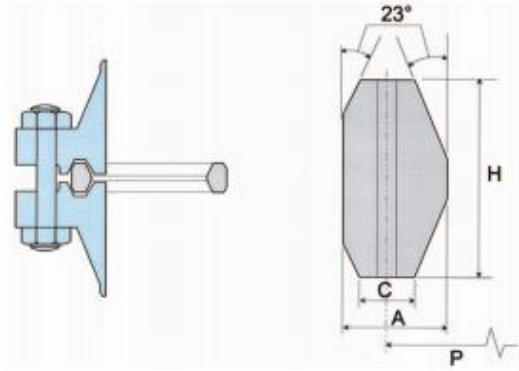
#### STYLE BX



#### STYLE BX TOLERANCES

Dimension	Tolerances (mm)	
	API 6A & 17D	ASME B16.20
<b>A</b> Width of ring	+0.20/-0.0	+0.20/-0.00
<b>C</b> Width of flat	+0.15/-0.0	+0.15/-0.00
<b>D</b> Hole size	+0.5	+0.5
<b>H</b> Height of ring	+0.20/-0.0	+0.20/-0.00
<b>OD</b> Outside diameter	+0.0/-0.15	+0.00/-0.15
<b>ODT</b> Outside diameter of flat	±0.05	±0.05
<b>23°</b> Angle of sealing face	±0° 15'	±0° 15'

**STYLE RX**



**STYLE RX TOLERANCES**

Dimension	Tolerances (mm)	
	API 6A	ASME B16.20
<b>A</b> Width of ring	+0.20/-0.0	+0.20/-0.00
<b>C</b> Width of flat	+0.15/-0.0	+0.15/-0.00
<b>D</b> Height of outside bevel	+0.0/-0.8	+0.0/-0.76
<b>H</b> Height of ring	+0.20/-0.0	+0.20/-0.00
<b>OD</b> Outside diameter	+0.5/-0.0	+0.51/-0.00
<b>P</b> Average pitch diameter	±0.13	not given
<b>23°</b> Angle of sealing face	±0° 30'	±0° 30'

**SEATING STRESS**

Please follow the following sealing stress parameters to achieve a reliable seal:

MATERIAL	IDENTIFICATION	SEATING STRESS (20°C)		
		Minimum (N/mm <sup>2</sup> )	Optimum (N/mm <sup>2</sup> )	Maximum (N/mm <sup>2</sup> )
Soft Iron	D	235	350	525
Low Carbon Steel	S	265	400	600
A182FS	FS	400	600	900
SS304	S304	335	500	750
SS315	S316	335	500	750
SS321	S321	335	500	750
SS347	S347	335	500	750

Ring Type Joint gaskets are also available in other materials – please contact us to discuss further.

1404 ARTHUR PORTER DRIVE, BURBUSH, HAMILTON, NZ

PHONE: 0800 238837

EMAIL: SALES@BETTERINDUSTRIAL.CO.NZ WEB: WWW.BETTERINDUSTRIAL.CO.NZ